

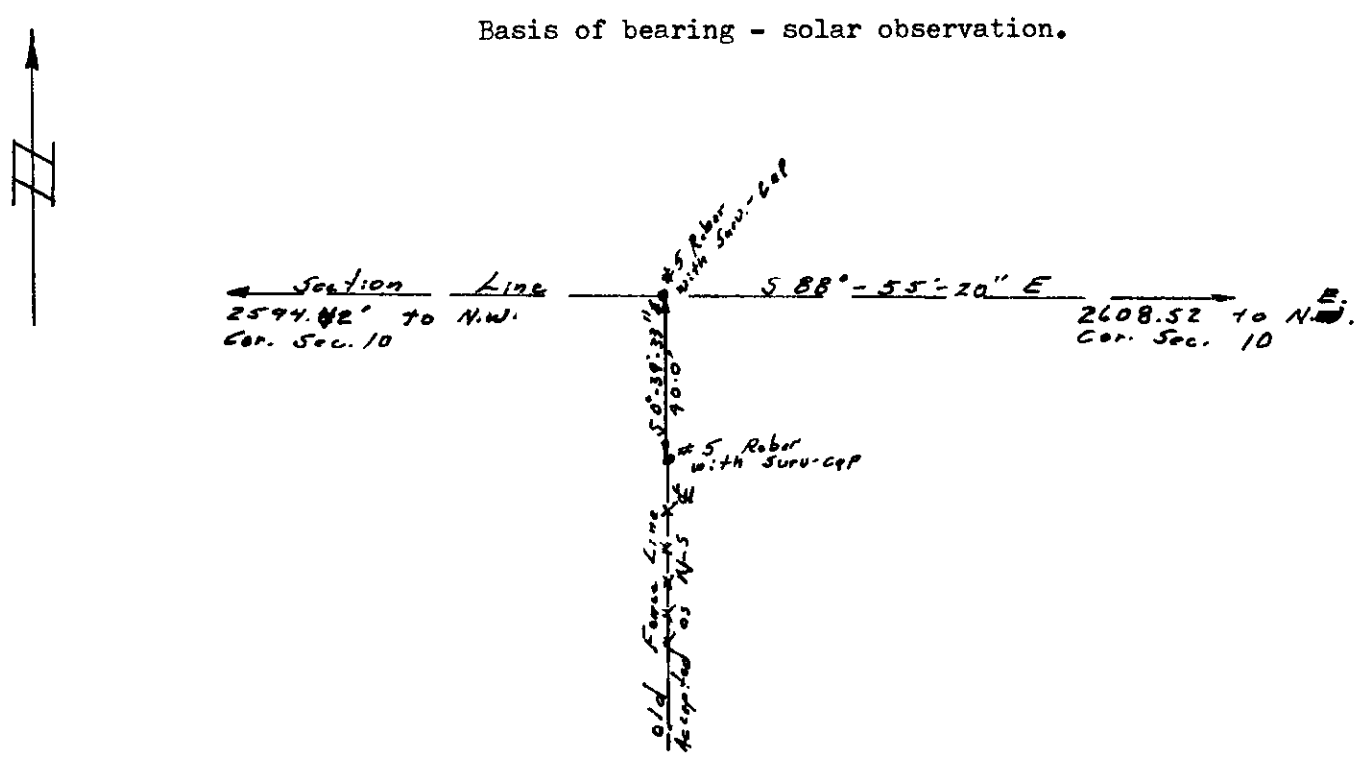
CERTIFIED LAND CORNER RECORDATION

LOCATION $\frac{1}{4}$ $\frac{3}{10}$ T 12 N, R 62 W 6th P.M.	DESCRIPTION OF CORNER EVIDENCE FOUND, AND ORIGINAL RECORD (if known) Nothing found at corner. Set corner on line between 2 section corners at intection of north-south fence accepted by both adjacent land owners as the north-south centerline of the section. G.L.O. record - brass cap monument.
--	---

DESCRIPTION OF MONUMENT AND ACCESSORIES ESTABLISHED TO PERPETUATE THE ORIGINAL LOCATION OF THIS CORNER:

Set # 5 rebar, 18" long, with surv-cap at the corner.
 Set # 5 rebar, 18" long, with surv-cap, 40.0 feet southerely, (see sketch).

SKETCH, WITH COURSE AND DISTANCE TO ADJACENT CORNER IF DETERMINED IN THIS SURVEY.
 (May Sketch or Paste Reproduction on Reverse Side.)



I, Robert C. Corbet certify that I have carefully performed or reviewed the work done on the diagrammed corner as reported on this recordation form and approve the same.

Robert C. Corbet LS 495
 Signature of Surveyor Registration No.

STATE OF WYOMING,
 Office of Clerk and Recorder,
 County of Sarawie

This "corner record" was filed for record on the 6 day of January, 1975, was noted on the cross-index plat and is assigned page No. _____, in book No. _____

James C. Whitehead
 County Official

Cross Index No. <u>E 15</u>	T. <u>12</u>	R. <u>62</u>	<u>6</u> Mer.
_____	T. _____	R. _____	Mer.
_____	T. _____	R. _____	Mer.
_____	T. _____	R. _____	Mer.
_____	T. _____	R. _____	Mer.
_____	T. _____	R. _____	Mer.
_____	T. _____	R. _____	Mer.

Photographed
 Indexed
 Filed
 Assessor

The State of _____
 County of Larimer _____
 This instrument was filed for record
 at _____ 128 _____ P. M. on the
 _____ 6th day of _____ January
 A. D. 19 _____ 75 and duly recorded in
 Book _____ on page _____

John C. Mitchell

County Clerk & Ex-officio Register of Deeds
 by *Paul Brown* Deputy